



The Meridian Line - Sunday 24.11.2024

“For every minute you are angry you lose sixty seconds of happiness.” — Ralph Waldo Emerson

A graphic with a black background and a radial pattern of colorful lines (red, yellow, green, blue, purple) emanating from the center. The text 'BLACK FRIDAY SALE!' is written in large, white, bold, sans-serif capital letters across the center.

**BLACK
FRIDAY
SALE!**

Get ready for our biggest ever Black Friday Sale! For a limited time, enjoy a fantastic 10% off nearly everything on our website. The only exclusions? Map Packs, Clearance items (because they are both already incredible deals!), and Gift Vouchers. That’s right—save 10% on books, atlases, maps, wine maps, and digital maps! Whether you’re searching for the perfect Christmas gift or planning your next epic adventure, we’ve got you covered. Don’t wait—shop now and make this Black Friday unforgettable!

Our Black Friday Sale kicks off Thursday, 21 November, and runs until Saturday, 30 November! Simply use the code **MMBF24** at checkout to unlock your 10% discount. Don’t wait—this is your chance to save big on books, maps, atlases, and more. Start shopping today and make the most of this limited-time offer!

Focus on Five



Victoria Touring Map – from \$12.95

A 1:880,000 scale touring map of Victoria showcasing the state's premier tourist attractions, parks and forests, campgrounds, and key points of interest including the Silo Art Trail, wine regions, ski resorts and visitor information centres. Designed for clarity and ease of use, this map is the perfect companion for exploring Victoria, whether for business or leisure. The reverse side features a detailed Melbourne and Surrounds map along with an index of all Victorian locations.

<https://meridianmaps.com.au/product/victoria-touring-map/>

Goog's Track – from \$8.95

Goog's Track, a 500km 4WD trail in South Australia, connects Ceduna to Kingoonya. It features sand dunes, rocky outcrops, salt lakes, and mulga scrub. Named after Reginald "Goog" Sprigg, a geologist and explorer, the track reflects his vision of linking Ceduna to Tarcoola. Despite limited government support, Goog, with help from his family and others, constructed the road himself. The track offers designated camping areas with basic facilities. A high-clearance 4WD, proper gear, and experienced driving skills are essential. Novices should avoid this challenging route due to its remote location and potential hazards. This Westprint map details Goog's Track, covering Ceduna, Tarcoola, Kingoonya, and Wirrulla. It includes clear navigation, historical notes, points of interest, flora and fauna, photos, and information such as rest areas, camping spots, and GPS coordinates.

<https://meridianmaps.com.au/product/googs-track/>

4WD Days On the South Coast of WA – \$19.95

Explore the wild and stunning south coast of Western Australia with 18 4WD trips spanning over 2000 km. Complete with GPS coordinates and essential track and location details, 4WD Days on the South Coast is the perfect glove-box companion to help you make the most of your south coast adventures.

<https://meridianmaps.com.au/product/4wd-south-coast-wa/>

The World Political Pacific Centred – \$14.95

Plot your trips or plan your next journey with our Pacific-centred World political map featuring relief shading to highlight countries' topography and undersea features, along with the International Date Line. Complete with a comprehensive index, Hema's World Map is ideal for education, reference, or display.

<https://meridianmaps.com.au/product/world-pacific-centered/>

Silo Art Ultimate Guide - \$69.95

Embark on an Australian journey with *2024 Silo Art – The Ultimate Guide*. Showcasing 60 silos and 150 water towers, this premium coffee table book captures the stunning transformation of massive structures into breathtaking works of art. Through high-quality photographs, it celebrates the remarkable talent of the artists behind these monumental masterpieces.

<https://meridianmaps.com.au/product/silo-art-ultimate-guide/>

Meridian Musings

In the last edition, we paid our respects by including an article about Remembrance Day. We received this short article from Stefan

“On the 11th hour of the eleventh day of the eleventh month, each year, around the World, descendants of the Allied Countries gather to pay respect to those men and women who made the ultimate sacrifice in what was dubbed The Great War.

Few people after that horrific loss of life expected another Great War to happen in 1939, believing mankind had learned a grave lesson from the First.

Apart from the millions of lives affected by WW1, fewer people remember the cost to hundreds of thousands of horses in the War Front, never to return to their country of birth.

Even fewer folk would realize that The Dogs of War was an unknown tribute to another kind of horsepower, one that had rapidly been progressed by need.....and which made a legendary mark on the ground forces of the Allies on the muddy battlefields of France and Belgium.

That honour rests with the 1917 Mack AC truck which came to be known as The Bulldog.



The Mack Bros plant in Allentown, Pennsylvania during and after the conflict sent approx. 5000 AC Models in the series 1 and series 2, including 3 1/2, 5 1/2 and 7 1/2 ton configurations to the Allied effort in Europe. The AC series was extremely heavy duty with dual chain drive to the rear wheels, massive chassis and suspension and solid rubber military style wheels.

The pug nose hood hinged forward to allow access to the engine and the twin sided radiators were mounted behind the engine to prevent debris or collision to pierce the radiator core. The side doors could remain open or would slide down into the lower kick panel. The first series had mesh side panels in the hood and the second series had louvres in their place.

The British Royal Engineers marvelled at the sheer never say die attitude of these trucks, as they performed a variety of tasks on the muddy battlefields of France and Belgium.

The pug nose reminded them of British Bulldogs back home and often officers would call out, "Bring up the Bulldogs", for some herculean task.

The nickname stuck and came to the attention of the Mack Bros in Pennsylvania and in the latter stages of the war, the passenger side of the AC models were adorned with a brass plaque with a fighting Bulldog crouched in action.

As WW1 drew to an end Mack Bulldogs became integral to the major cleanup effort in France and Belgium and especially along the coasts where heavy

equipment had been sunk by fighting or deliberately scuttled to impede the invaders.

In these regions a special task force , the American Salvage Force led the operations and included is an image of a Negro Mack driver perched on his running board, checking his instruction manual.

I hope you will enjoy my brief look at a remarkable truck from the annals of time.

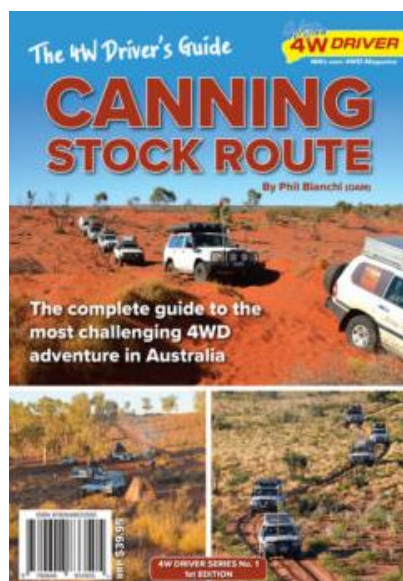
In the last edition of the Meridian Line, we printed an enquiry from John who was looking for some information about visiting Shoemaker Crater. Unfortunately, we did not receive any responses so I thought I might run it for another fortnight.

“A group of us are planning to visit some deserts in WA next year, including the southern section of the Canning Stock Route.

The CSR passes tantalizing close to the Shoemaker Crater and we'd like to access it. We wonder if any of your readers have ever been there, and if so, how they accessed it? The crater is 100 km NNE of Wiluna and 30 km SE of Well 4A.”

I did, however, do a bit of research and found details of a trip taken in 2022 by a group of travellers which may be of interest to you! Details of their trip can be found at <https://www.adventures.net.au/road-trips/shoemaker-crater>.

I also had a quick look through The 4W Driver's Guide – Canning Stock Route (<https://meridianmaps.com.au/product/canning-stock-route-4wd-guide/>). I could only see a reference to Wolfe Creek Crater and not Shoemaker's Crater although it was quite an interesting read and packed with a lot of information for those planning to travel The Canning Stock Route.



What's On

November 29: Condo Comes Alive Street Festival in Condobolin, New South Wales. Festival brings together visitors and locals for an evening of fun, food and entertainment.

<https://www.lachlan.nsw.gov.au/Events-directory/CONDO-COMES-ALIVE-Street-Festival-2024>

November 30: Annual Christmas Carnival and Fireworks Spectacular in Cootamundra, New South Wales. The carnival offers something for everyone- stroll through market stalls, brimming with unique holiday gifts, crafts and enjoy fireworks.

<https://www.visitnsw.com/destinations/country-nsw/riverina/cootamundra/events/annual-christmas-carnival-and-fireworks-spectacular>

November 30: Circular Head Show in Stanley, Tasmania. The Show retains all the traditional features you expect of an agricultural show including equestrian events, wood chopping, home industries, dairy and beef cattle competition.

<https://www.circularheadshow.com.au/>

November 30 – December 1: 155th Kingston Agricultural Show in Kingston Victoria. An event packed with family fun, free displays, horse events, competitions and more.

<https://www.kingstonagsociety.org.au/>

December 6: 2024 George Town Christmas Carnival: An Aussie Christmas in George Town, Tasmania. Celebrate the season with an Aussie twist at this year's Christmas Carnival! Enjoy a Christmas, carols, food and market stalls, family activities and live music.

<https://georgetown.tas.gov.au/christmas-carnival>

December 15: Musin in the Gardens in Hamilton Victoria. Hosted by The Friends of The Hamilton Botanic Gardens "Music In The Gardens" showcases live music by local musicians.

<https://visitgreaterhamilton.com.au/event/?productID=659f2b062476aac539a0ae87>

Seasonal Updates

Please be aware that road and Park closures are constantly changing and it is always best to check for changes before you set out.

For more regular updates on closures, please check our Facebook page at <https://www.facebook.com/MeridianWestprintMaps> as we try to include warnings and advice as we become aware of them.

The latest Desert Parks Bulletin has been uploaded to our website. For this and other Desert Pass updates, please go to <https://meridianmaps.com.au/deserts-pass-update/>

Anne Beadell Highway is closed by the Department of Defence from 21 November 2024 to 18 December 2024.

Witjira National Park and Munga Thirri – Simpson Desert National Park open to 4WD only.

Roads now Open to 4WD in Innamincka Regional Reserve and Malkumba-Coongie Lakes National Park.

The Wet Season has started in the Northern Territory, which means that seasonal closures have begun. Check what's open before you leave home <https://nt.gov.au/parks/regions/darwin>

The following have already closed:

Berry Springs- pools closed for swimming. Picnic area remains open.

The Reynolds Track at the Sandy Creek turn off and the southern Park entrance on the Daly River Road

Surprise Creek Fall

Maguk

The Jim Jim Falls region and Karnamarr campground.

The Heysen Trail has closed for fire danger season. The southern section along the Wild South Coast Way remains open & (excepting Total Fire Ban days) walking trails in National Parks or Forestry SA are available.

Full details on Friends of Heysen Trail website:

<https://heysentrail.asn.au/.../heysen-trail-closure.../>

Grand Strzelecki Track closures:

Macks Creek Loop partly closed. Due to severe storm damage, the full length of Wild Cherry Track remains closed and expected to reopen once the track dries and machinery can operate without causing track damage. This means there is no access to the lower section of Macks Creek to Roberts Road.

Use Bulga Park Road from Tarra-Bulga National Park Visitor Centre Carpark to Macks Creek Hall Carpark Rest Area if you wish to hike there and back the same way.

Tarra Valley Loop partly closed. Tarra Valley Link Track (only applies from the caravan parks to Diaper Track) section is closed pending clearing. To access Diaper Track or Great Forest Walk, either hike that section along Tarra Valley Road or park your vehicle at the Tarra Valley Picnic Area Carpark.

Park-To-Park Track fully closed. Due to severe storm damage, all sections of Billys Creek from Morwell National Park to Tarra-Bulga National Park including Jumbuck Rest Area are closed. Expected to reopen late 2025.

As the wet season commences, road access to Kimberley parks may quickly change if roads become impassible. Parks will reopen in April/May 2025 pending weather and road conditions. The following parks are currently close:

Walarra Mindi (Mt Hart)

Purnululu Visitor Centre

Mitchell River National Park

Bandilangan (Windjana Gorge) National Park

Dimalurru (Tunnel Creek) National Park

As at December 1, the following will also close pending road and weather conditions:

Wunaamin Conservation Park including Dulundi (Silent Grove) campground, and Dalmanyi (Bell Gorge).

Miluwindi Conservation Park including Lennard Gorge

Purnululu National Park

Danggu (Geikie Gorge) National Park

Updates can be found at

<https://www.australiasboabcountry.com.au/news/seasonal-closures-for-kimberley-parks/372>

Disclaimer: These events were correct at the time they were added to the Meridian Line; however, this may have been some time before the actual event. Please make your own enquiries before travelling to an event.

Reader's Stories

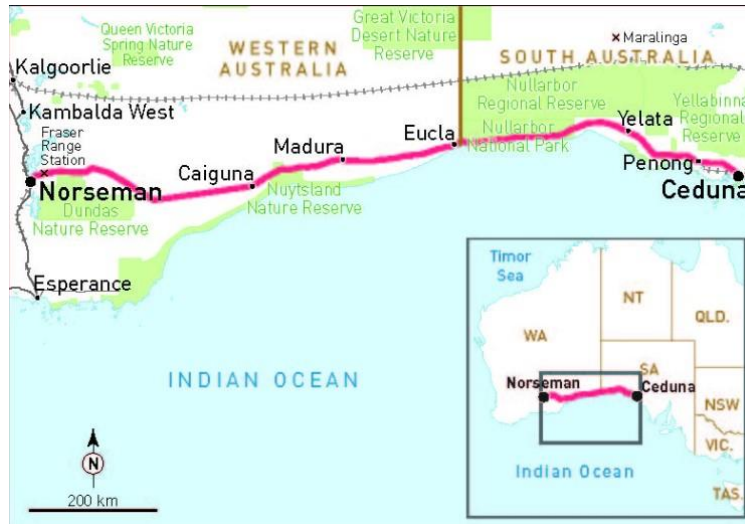
Do you have a story?

Articles for this newsletter can be emailed to rochelle@meridianmaps.com.au

Crossing the Nullarbor Plain

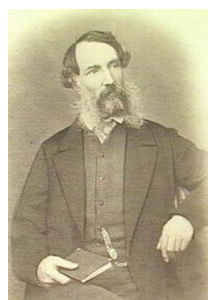
The Nullarbor Plain is considered one of Australia's most iconic road trips, renowned for being the longest, flattest, and straightest road in the country. Stretching for 1,200 kilometres between Norseman in Western Australia and

Ceduna in South Australia, it occupies an area of approximately 200,000 square kilometres. Bordering the southern sea cliffs of the Great Australian Bight and the northern edge of the Great Victoria Desert, the Nullarbor offers travellers an unparalleled experience in isolation and beauty.



Historically, the Nullarbor was seasonally inhabited by indigenous Mirning and Yinyila peoples, who referred to the region as Oondiri, meaning “waterless.” Their intimate knowledge of the land’s waterholes and ecosystems allowed them to thrive in what might seem an unforgiving environment. The name Nullarbor derives from the Latin words nullus (“no”) and arbor (“tree”), an allusion to the sparse vegetation found across the plain.

European exploration of the Nullarbor began in the mid-19th century, with Edward John Eyre making the arduous crossing in the 1840s. Battling extreme heat and limited water supplies, Eyre’s journey is a testament to human endurance and determination. His experiences inspired many adventurers in the years that followed. In the early 20th century, the construction of the Trans-Australian Railway, completed in 1917, linked Australia’s east and west coasts. The Nullarbor became home to the world’s longest straight stretch of railway track, measuring 478 kilometres.



John Edward Eyre

In 1941, the Eyre Highway was built, named in honour of Edward Eyre. This road runs through the Nullarbor Plain, crossing the top of the Eyre Peninsula and continuing for 470 kilometres toward Port Augusta. The section of Eyre Highway, between Balladonia and Caiguna in Western Australia, is regarded as the longest straight section of road in Australia and one of the longest in the world. The road stretches for 146.6 kilometres (91.1 miles) without a single curve and is signposted and commonly known as "90 Mile Straight".



Though the name Nullarbor suggests an absence of plant life, the plain does support a variety of resilient vegetation. Dominated by saltbush and bluebush, these shrubs thrive in the nutrient-poor, limestone-rich soils providing critical habitat and food for native wildlife. Small grasses and wildflowers emerge after rain, bringing bursts of colour to the otherwise subdued landscape. Along the edges of the plain, mallee eucalypts and acacias can be found, demonstrating the adaptability of plant life to this harsh environment.



The Nullarbor Plain also supports a surprising array of wildlife, uniquely adapted to its arid conditions. Iconic Australian animals such as kangaroos, emus, and dingoes traverse the plains, while smaller creatures like lizards and snakes thrive in the hot, rocky terrain. Birdlife is abundant, with wedge-tailed eagles soaring above and zebra finches and galahs adding movement and

colour to the scene. At night, nocturnal animals like bats and bilbies emerge, while the endangered southern hairy-nosed wombat can also be spotted in some areas. Wild camels, descendants of those imported for transport during the 19th century, now roam freely across the plain. Initially thought to die off, these camels have thrived in Australia's deserts, contributing to the region's unique ecosystem.



The Nullarbor's proximity to the Great Australian Bight allows the opportunity for marine life sightings. Southern right whales migrate through the area from May to October, often seen from the Head of Bight, where they come close to shore to calve and nurse their young. Other marine creatures include Australian sea lions, playful dolphins, and various seabirds that soar above the cliffs. Occasionally, great white sharks can also be seen in these waters.

The Nullarbor is also home to an extensive network of limestone caves, formed over millions of years by the erosion of the limestone bedrock. These caves contain stunning features such as stalactites, stalagmites, and crystal-clear pools, and many also house significant fossil deposits, including remains of extinct megafauna. Notable caves such as the Murrawijinie Caves near the Nullarbor Roadhouse are accessible to visitors. Others, like Cocklebidy Cave, extend for kilometres underwater, making it one of the world's most challenging cave dives. The Old Homestead Cave, one of Australia's longest cave systems, stretches for approximately 34 kilometres and contains remarkable geological formations, including gypsum crystals and smooth flowstone.

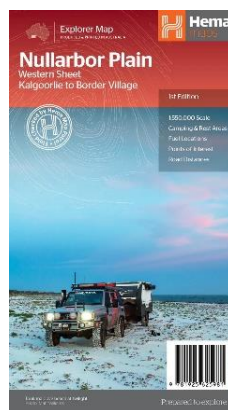
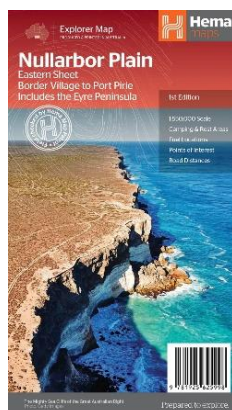


Murrawijinie Caves

Driving across the Nullarbor Plain is an unforgettable adventure through one of the most remote and awe inspiring landscapes in the country. The road, which seems to stretch endlessly into the horizon, presents challenges due to the long distances between fuel stops, the few towns along the way, and the extreme temperatures. Travellers must prepare by ensuring their vehicles are in good condition, carrying extra water, and planning for emergencies. Despite its isolation, the journey offers remarkable sights—dramatic cliffs overlooking the Southern Ocean, vast saltbush plains, quirky roadside attractions, and encounters with native wildlife. For many, like me, crossing the Nullarbor remains an item on the bucket list, an experience to be cherished and tackled in the coming years.



<https://meridianmaps.com.au/product/nullabor-plain-tourist-map/>



<https://meridianmaps.com.au/product/nullabor-plain-western/>

<https://meridianmaps.com.au/product/nullabor-plain-eastern-sheet/>

<https://meridianmaps.com.au/product/nullabor-plain-map-pack/>

Meridian Mirth

To share your jokes, please send them to rochelle@meridianmaps.com.au.

A magician worked on a cruise ship. The audience was different each week so the magician did the same tricks over and over again. There was only one problem: The captain's parrot saw the shows each week and began to understand how the magician did every trick

Once he understood, he started shouting in the middle of the show,

"Look, it's not the same hat!" or,

"Look, he's hiding the flowers under the table!" or

"Hey, why are all the cards the ace of spades?"

The magician was furious but couldn't do anything. It was, after all, the captain's parrot.

Then one stormy night on the Pacific, the ship unfortunately sank, drowning almost all who were on board.

The magician luckily found himself on a piece of wood floating in the middle of the sea, as fate would have it ... with the parrot.

They stared at each other with hatred, but did not utter a word.

This went on for a day... and then 2 days ... and then 3 days

Finally on the 4th day, the parrot could not hold back any longer and said

"OK, I give up. Where's the ship?"

One fine day, a cop actually has to pull over a car on the interstate for driving way under the speed limit. He goes up to the window, then, and sees that the driver is a... very old woman. He tells her, though, "You know you're only going 19 kilometres per hour on a freeway?"

The woman says, "Well, yes, the speed limit right there says to only go at 19." And she points to a sign, ahead, on the side of the road.

The officer looks at the sign and sees that it says "I-19", the freeway's name.

"Oh," he says. "That's not the speed limit, that's just the name of the road."

The woman apologises and realizes her mistake. Before the officer leaves, though, he looks over and sees another elderly woman in the passenger seat with wide eyes and a scared expression, staring at the road ahead. He notices that two other women are sitting in the back seat in a similar manner.

"Are they all okay?" he asks, gesturing to the others.

"Oh, yes," the driver answers. "They must just still be a little shook up."

"From what?" the cop questions.

"Well," the driver goes on. "We just got off of I-95..."

A bank robber pulls out gun points it at the teller, and says, "Give me all the money or you're geography!"

The puzzled teller replies, "Did you mean to say 'or you're history?'"

The robber says, "Don't change the subject!"

The new boat rental employee looked out at the lake. It was getting late and fog was starting to come in. He could just faintly make out one small rowboat, its number painted on the hull still way out on the lake and he had already used his bullhorn 30 minutes ago to tell all the rentals it was time to return to shore. He used his bullhorn again. "Boat #99 time to come in! Boat #99 please return to shore!" Nothing.

Another employee came up. "We don't have a boat #99."

The other employee looked again then raised his bullhorn. "Boat #66 - are you in trouble?"

I was working out at the gym when I spotted a sweet young thing walking in I asked the trainer standing next to me, "What machine should I use to impress that lady over there?"

The trainer looked me over and said; "I would recommend the ATM in the lobby."

The Fine Print

At The Meridian Line

Wherever possible we try to acknowledge the source of all information contained in this newsletter. We offer no guarantees for accuracy, but we do our best.

Get the Word Out

Feel free to forward this newsletter to any family or friends who you feel might enjoy a good read. If they would like to receive this newsletter on a regular basis they can register at: <https://meridianmaps.com.au/newsletter/>

Using information from this newsletter

You are welcome to use information from this newsletter, but we request that you kindly acknowledge that the information is from The Meridian Line.

Meridian Contact information

Email: rochelle@meridianmaps.com.au

Disclaimer

Please note that the opinions and articles expressed in The Meridian Line are not necessarily those of The Meridian team. Also, we do not endorse any products (other than our own), or tours listed in my contributed articles.