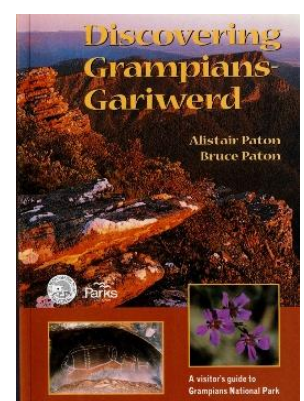
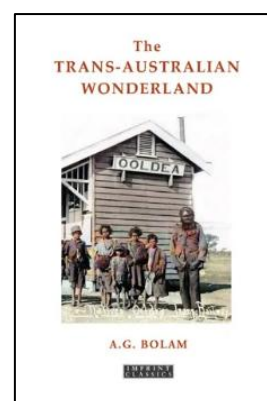
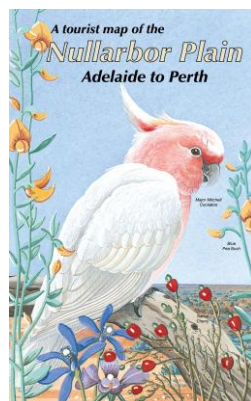
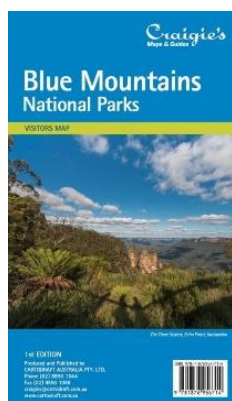
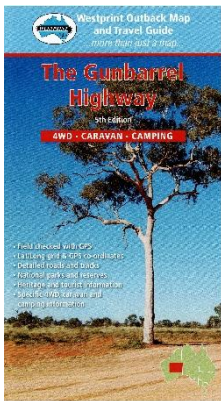




The Meridian Line - Sunday 07.06.2026

"You are never too old to set another goal or to dream a new dream." —C.S. Lewis



Focus on Five

The Gunbarrel Highway – from \$15.95

The section of the Gunbarrel Highway explored and surveyed by Len Beadell in 1958 is shown on this map, complete with GPS readings. It connects with the Canning Stock Route and the Tanami Track, forming part of a popular circular route for many 4WD travellers. While the Gunbarrel Highway is highlighted due to its popularity, the map also features the Great Central Road and a number of interconnecting tracks across the Gibson Desert. Westprint Maps are well regarded for their coverage of desert regions. Each map includes historical notes, information on explorers, points of interest, and details on local flora and fauna, along with photographs of notable landmarks. They are clearly presented and include road distances, rest areas, caravan parks, and fuel locations. This map covers the Great Central Road, Connie Sue Highway, David Carnegie Road, Leonora, Laverton, Glen Ayle Road, Rason Lakes Road, the western section of the Anne Beadell Highway, Heather Highway, and more.

<https://meridianmaps.com.au/product/gunbarrel-highway/>

Blue Mountains National Parks Visitors Map – from \$14.95

The Craigie's Blue Mountains National Park Map (scale 1:130,000) covers the Blue Mountains, Kanangra-Boyd, and Abercrombie River National Parks, extending from Lidsdale in the north to Wombeyan Caves and Bargo in the south. This highly detailed map shows roads, highways, route shields, suburbs, and towns. It also clearly marks wilderness areas, forest boundaries, and water catchments, and includes a useful grid referencing the 1:25,000 NSW topographic map series. A valuable planning tool for visitors, the map highlights numerous fire trails and walking routes across the region. The reverse side features detailed town maps of Blue Mountains townships, including Blackheath, Medlow Bath, Katoomba, Leura, Wentworth Falls, Bullaburra, Hazelbrook, Woodford, Faulconbridge, Springwood, Valley Heights, Warrimoo, Blaxland, Glenbrook, Mount Riverview, and Lapstone. Also included are "mud maps" for walking tracks around Blackheath, Katoomba, Leura, and Wentworth Falls, showing lookouts, walking times, and track difficulty grades. Unfolded size: 700 x 1000 mm.

<https://meridianmaps.com.au/product/blue-mountains-map/>

A Tourist Map of the Nullarbor Plain Adelaide to Perth – from \$9.95

Traverse one of Australia's most iconic road trips with this beautifully illustrated map of the Nullarbor Plain, stretching from Adelaide to Perth. Published by Carto Graphics, this double-sided, folded map captures the vastness and character of the Nullarbor, offering a detailed and practical guide for travellers taking on this legendary journey. The map features comprehensive road information, including key routes, distances, and important junctions, helping drivers confidently navigate one of the most remote stretches of highway in the country. Alongside the practical detail, it also includes insightful notes and points of interest that highlight the history, landscapes, and unique features found along the way.

<https://meridianmaps.com.au/product/nullabor-plain-tourist-map/>

The Trans-Australian Wonderland - \$24.95

The first book to document the natural history of life on the Nullarbor Plain was written by station-master A. G. Bolam and originally published in 1923. In this work, Bolam draws on his experiences living and working in the region, including his time with Aboriginal trackers and workers around Ooldea during the westward construction of the transcontinental railway from South Australia into Western Australia. The book provides both a personal account and a detailed record of the Nullarbor's environment, exploring its unique geography, landscapes, and native wildlife. It also offers an extensive ethnographic insight

into the Ooldea people, with Bolam documenting many aspects of their nomadic way of life.

His observations cover a wide range of cultural practices, including attitudes toward clothing and footwear, methods of smoking and bartering, and traditional approaches to marriage, toolmaking, weapon construction, and whip-making. He also records practical survival skills such as water transportation, fire-starting techniques, and the use of smoke signals for communication. In addition, Bolam describes aspects of their medicinal knowledge and surgical practices, as well as social and ceremonial life, including recreational activities, body decoration, corroborees, formal ceremonies, death rituals, and burial customs. Of particular note are his accounts of message sticks, forms of Aboriginal writing, advanced tracking skills, and sophisticated methods used to locate water in the harsh desert environment of the Nullarbor.

<https://meridianmaps.com.au/product/trans-australia/>

Discovering Grampians/Gariwerd – \$19.95

The park is widely recognised for its rich diversity of flora and fauna, set within a dramatic mountain landscape where rugged sandstone ranges rise from the surrounding Wimmera plains. In addition to its natural significance, the area holds deep cultural importance as part of a continuing and living Indigenous heritage, with strong and enduring connections to Country reflected throughout the region. This essential guide is designed to help visitors plan their trip while also deepening their understanding and appreciation of Grampians–Gariwerd National Park. It brings together practical planning information with interpretive content that enhances the visitor experience. It includes suggested itineraries to assist with trip planning, along with details of 48 walking tracks complete with maps that cater to a wide range of abilities. Scenic driving routes are also featured, alongside information on rock climbing and other outdoor activities available within the park. The guide contains 16 pages of colour plates showcasing wildflowers and native wildlife, as well as Gariwerd creation stories that share important Indigenous cultural knowledge. To further support exploration and appreciation of the region, it also provides comprehensive bird and animal lists.

<https://meridianmaps.com.au/product/discovering-grampians-gariwerd/>

Meridian Musings

Recently, we enjoyed a day trip to the Macedon Ranges, and it turned out to be one of those perfect autumn days that encourages you to slow down and simply enjoy the surroundings. The weather was magnificent and, unsurprisingly, plenty of others had the same idea, with the roads busy as people made the most of the conditions.

We spent time exploring the Macedon Regional Park, admired the autumn colours during a relaxing walk, and visited the Mount Macedon Memorial Cross to take in the sweeping views across the district. Despite the crowds, it was a thoroughly enjoyable day and thankfully far less eventful than Terry's experience travelling along the Tanami Track, which you can read about in this edition's Reader's Story section.



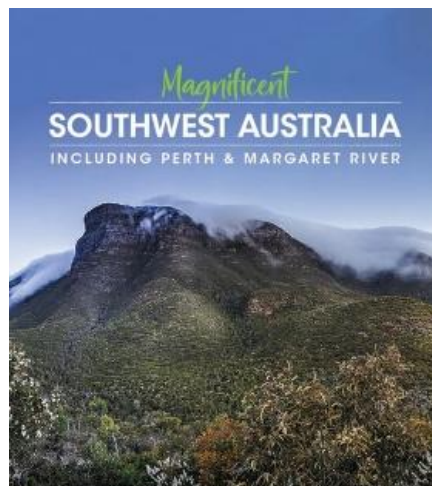
With the King's Birthday long weekend coming up, it's a great opportunity to get out and explore again. In Victoria, this long weekend also marks the unofficial start of the ski season, along with the introduction of a number of seasonal road closures across alpine and high country areas. Before heading off, it's important to check current conditions, as some routes may be closed or affected, and to take extra care on roads that could be more challenging than usual at this time of year.

What's New to the Website

Magnificent Southwest Australia including Perth & Margaret River - \$16.99

Filled with stunning photography, this 64-page large-format book showcases the beauty and diversity of Southwest Australia. Accompanied by engaging and informative commentary, it offers readers an inspiring introduction to one of Australia's most remarkable regions.

A wonderful keepsake for both Australian and international visitors, *Magnificent Southwest Australia* is equally appealing to armchair travellers and those planning their own adventures. Readers will return to its pages time and again for inspiration, information and a reminder of the region's extraordinary landscapes and attractions. The book features sections on geography, wildlife and wildflowers, Indigenous culture, Perth, the Pinnacles, Wave Rock, Busselton, Rottnest Island, the Cape-to-Cape Track, Denmark and the Valley of the Giants, Albany and the Stirling Ranges, Fitzgerald River National Park, and Esperance.

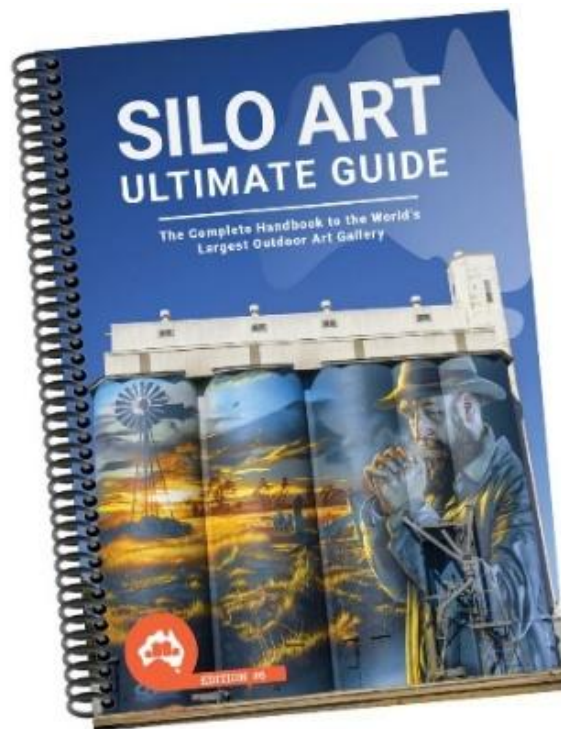


<https://meridianmaps.com.au/product/magnificent-southwest-australia/>

Silo Art Ultimate Guide - 6th Edition - \$69.95

Start your journey around Australia with the 2026 Silo Art Ultimate Guide. Discover 77 captivating Silo Art Locations, each telling a unique story through its magnificent murals and artworks. Plus over 190 Water Tower locations, showcasing these towering structures' blend of functionality and artistry. This spiral bound book is equipped with detailed maps and precise street locations for each listing, ensuring a seamless exploration experience. Filled with stunning photography and detailed information, the book takes readers on a visual journey through some of Australia's most impressive public art trails, from remote outback towns to thriving rural centres. Each page highlights the creativity, stories and technical skill behind these towering murals, revealing how artists have transformed everyday industrial structures into extraordinary works of art that capture local history, culture and community spirit. Curated into 17 regional trails, the guide allows for effortless trip planning, catering to varied interests and timeframes.

This premium coffee table book, offers a captivating exploration of colossal silo and water tower art. Through high-quality photographs, each page unveils the remarkable talent of artists who turn massive structures into breathtaking masterpieces.



<https://meridianmaps.com.au/product/silo-art-ultimate-guide-6th-edition/>

Not new to the website – but something that is sometimes overlooked! Many of the Meridian and Westprint maps are also available in digital format as well as hard copy. Meridian maps are available in Digital Versions in GeoTiff format for moving map software and in PDF format from Avenza Maps.

<https://meridianmaps.com.au/product-category/digital-maps/>

Westprint map are available in OziExplorer format.

<https://meridianmaps.com.au/product-category/digital-maps/westprint-digital-maps/>

Simon's Monthly Comment

Not for Profit Landholders

As each new edition of our maps comes up for revision, we research ways to improve and update the information they contain. One important area is land management, including changes to state and nationally managed conservation reserves, along with the increasing number of properties now being purchased and managed by not-for-profit organisations for conservation purposes.

Recent editions of our maps that now include these conservation properties are the Oodnadatta Track Map and the Hattah-Kulkyne Map Guide.

Not-for-profit landholders have become an increasingly important part of the Australian bush and outback landscape over recent decades. While much of inland Australia was traditionally managed as large pastoral leases for cattle and sheep production, changing economic conditions and growing awareness of environmental conservation during the late twentieth century led to the emergence of charitable and conservation-focused land ownership.

From the 1990s onward, organisations such as Bush Heritage Australia and Australian Wildlife Conservancy among others, began purchasing significant outback properties to protect endangered ecosystems, native wildlife and culturally important landscapes. Many former cattle stations were subsequently transformed into conservation reserves, with the focus shifting from grazing to biodiversity protection, feral animal management, and scientific research.



At the same time, Indigenous organisations and ranger groups expanded their role in caring for Country, combining traditional knowledge with contemporary land management techniques. These partnerships have become a vital part of conservation efforts across remote Australia, particularly in areas vulnerable to drought, wildfire and invasive species.

Today, many not-for-profit landholders welcome visitors to experience these remarkable landscapes firsthand. Some properties offer guided tours, camping areas, volunteer programs and conservation holidays where members of the public can assist with activities such as wildlife monitoring, fencing projects, weed removal and habitat restoration. Visitors are often given a rare opportunity to learn about native species, Indigenous culture and the challenges of managing remote country.



These experiences not only provide valuable support for conservation work but also help connect Australians with the outback in a meaningful and practical way. Through tourism, volunteering and education programs, not-for-profit landholders are helping preserve millions of hectares of unique Australian landscapes while encouraging the wider community to become involved in protecting the environment for future generations.

One such conservation property is Raakajilm. This property abuts the northern border of the Hattah Kulkyne National Park, under the umbrella of Mallee Conservation. This property has been working for many years to rehabilitate the property back its natural state, Unfortunately the January 2026 fires which burnt much of the northern part of the national park also burnt through Raakajilm as well, causing significant damage to the environment. Follow them at <https://www.malleeconservation.com.au/> to see the property recovers. Consider volunteering if you like to be part of helping restore Australia's natural environment.

Seasonal Updates

Please be aware that road and park closures are constantly changing and it is always best to check for changes before you set out.

For more regular updates on closures, please check our Facebook page at <https://www.facebook.com/MeridianWestprintMaps> as we try to include warnings and advice as we become aware of them. **The** latest Desert Parks Bulletin has been uploaded to our website. For this and other Desert Pass updates, please go to <https://meridianmaps.com.au/deserts-pass-update/>

Seasonal road closures in Victoria. generally operate from after the King's Birthday long weekend in June through to the end of October, but the closures may be extended if conditions are not suitable to safely re-open the roads. A full list of closures can be found at [List of 2026 seasonal road closures](#).

Munga-Thirri Simpson Desert NP open with limited access. Access is only possible via SA or the NT. There is no access through to Queensland. Water is still laying in the eastern section of the desert and the Queensland park is closed.

- Colson Track – Open
- Poeppels Corner – Closed
- Public Access Route 15 K1 Warburton Crossing – Close

Witjira NP

- Dalhousie Campground – Open
- Three O'Clock Creek Campground – Open
- Dalhousie Campground to Purni Bore – Open
- The Dalhousie airstrip - Open
- Bloods Creek Ruin to Federal Waterhole Track: Closed
- Binns Track: Closed
- Public Access Route Number 8 Pedirka: Closed due to extensive water damage

Kati Thanda-Lake Eyre NP is closed.

Innaminka Regional Reserve and Malkumba – Coongie Lakes National Park are closed.

What's On

11 – 12 June: Rocky Show in Queensland. Brings the country to the city through animal exhibits and competitions and providing entertainment through sideshow alley, commercial site displays and an evening entertainment program in Centre Ring to captivate the crowds.

<https://www.rockyshow.com.au/Home>

12 – 14 June: Coober Pedy Opal Festival in South Australia. A celebration of opal, community and the character of Coober Pedy.

<https://opalfestival.com.au/>

13 June: Walgett Race in NSW. Premier track out west, delivering a fiercely competitive 6 race program set against the charm of the bush. The racing attracts big names and an impressive field of quality contenders.

<https://www.walgettraces.com.au/>

19 – 20 June: Mt Isa Show in Queensland. showcases the very best of Mount Isa and invites grey nomads and other travellers to come along to see displays around cooking, horticulture, art, photography, woodwork, quilting, live entertainment, as well as food stalls, market stalls, sculptures ... and pig races!

<https://www.mountisashow.com.au/>

19 – 21 June: Mansfield Lantern Festival in Victoria. Celebrates the winter solstice - the longest night of the year. Streets fill with light, open fires in the cold and handmade lanterns move through town carried by people.

<https://www.mansfieldlanternfestival.com.au/>

19 June: Solstice in the Square in Tasmania. Centres around the winter solstice — fires, mulled wine, food stalls, live music, community gathering and winter atmosphere.

<https://georgetown.tas.gov.au/solstice>

19 – 22 June: Alice Springs Beanie Festival in Northern Territory. A unique event that celebrates this great Australian icon. Find the perfect beanie from among more than 4,000 beanies displayed at the Araluen Cultural Precinct in Alice Springs. A weekend with music, the famous tea shop, the Beanie Olympics, and a program of textile workshops and crafts for kids.

<https://www.beaniefest.org/>

20 June: Maryvale Winter Solstice and Maryvale Teardrop Muster in Queensland. Celebration of the warmth of the Maryvale community, with food stalls, markets and live music. Warm up on the shortest day of the year by sitting around campfires, chatting with family and friends and the crackling bon fire!

<https://www.queenslandcountrytourism.com.au/listings/maryvale-winter-solstice>

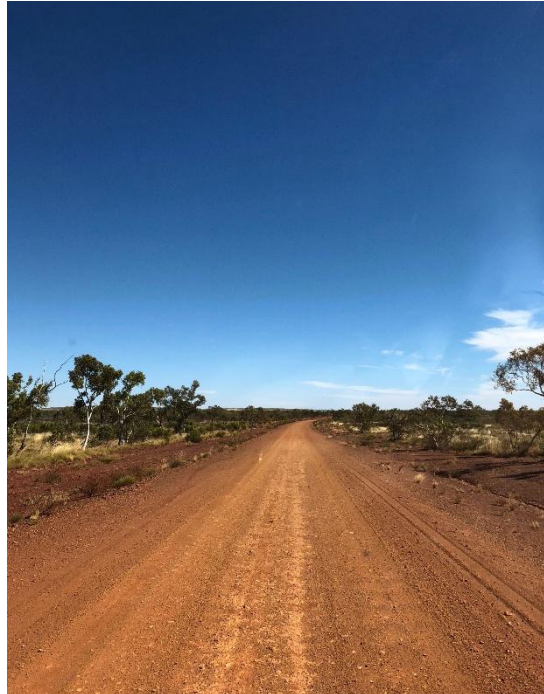
Do you have a story?

If you've got a trip or tips to share, we'd love to hear from you - rochelle@meridianmaps.com.au.

Strange Encounters On The Tanami Track

It was 1988 and my workmate Ben and I were on one of my excursions around Australia. Leaving Alice Springs there is a 1040 km 'short cut' to the Kimberleys in Western Australia via the Tanami Track past the aboriginal

settlement of Yuendumu and the lonely road house of Rabbit Flat approximately 600km distant. The present Tilmouth Well road house didn't exist in those days. Shortly before reaching Yuendumu we encountered the first strange incident.



Section of the Tanami Road

Up ahead an old Holden car was parked sideways across the road with the bonnet up and surrounded by a few aborigines. We approached slowly in case they needed help but we were waved on. Glancing back we noted that the car didn't have an engine. Perhaps they were waiting for the RAA to bring them a new engine. About 100km east of Rabbit Flat we could see in the distance another car parked on the side of the road again with the bonnet up and from its confines stepped a man who walked into the middle of the road and flagged us down. I approached cautiously and as we got closer his presence prompted us both to lock our doors. He was a giant of a man with a mop of bushy unkempt hair and thick beard just as bad. This wasn't the only reason that I only wound my window down a short way as he was dressed in army camouflage and shirt and trousers were ripped to pieces and looked like he had been in a fight with a tiger. (for that reason, Ben and I refer to him as the tiger man when reminiscing).

He said he was broken down and could we take him to Alice Springs. We couldn't have taken him if we wanted to as my short wheelbase Nissan Patrol was packed to the roof with all our gear for a couple of months on the road. We told him he should wait for someone going his way but we would take a

message to Rabbit Flat and advise people there of his plight. He said if we know someone. (if we know someone ???) who would take him to Alice Springs he would give them two 44 gallon drums of fuel and pointed a little way up the road, to what we hadn't yet seen. a trailer in the bush . just off the road with two 44 gallon drums on board.

Before departing ee enquired as to whether he had food and water and he assured us he did but made one request. "Did we have any smokes?" Unfortunately for him we didn't smoke so he wasn't having much luck. As we departed we were in for one more surprise. Passing by the open door of the car, an early model Range Rover. (I guess that explained all the fuel) we could see that the driver's seat was slashed to pieces, just like his clothes. A strange encounter indeed!

Meridian Mirth

To share your jokes, please send them to rochelle@meridianmaps.com.au. Many thanks to Simon, Rob and Paul for their contributions!

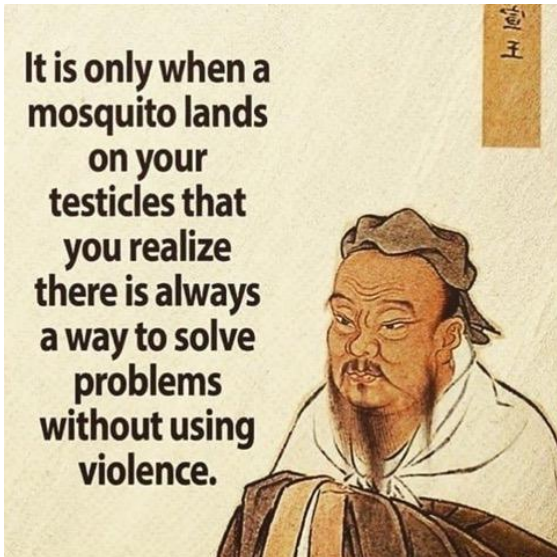
How times have changed! These were comments made in 1957.

- "I'll tell you one thing, if things keep going the way they are, it's going to be impossible to buy a week's groceries for \$20."
- "I'm afraid to send my kids to the movies any more. Ever since they let Clark Gable get by with saying 'damn' in "Gone With The Wind," it seems every new movie has either 'hell' or 'damn' in it."
- "Have you seen the new cars coming out next year? It won't be long before \$5000 will only buy a used one."
- "If cigarettes keep going up in price, I'm going to quit. A quarter a pack is ridiculous."
- "Did you hear the post office is thinking about charging a shilling just to mail a letter?"
- "If they raise the minimum wage to \$1, nobody will be able to hire outside help at the store."
- "When I first started driving, who would have thought gas would someday cost 29 cents a gallon. Guess we'd be better off leaving the car in the garage."
- "Kids today are impossible. Those duck tail haircuts make it impossible to stay groomed. Next thing you know, boys will be wearing their hair as long as the girls."
- "If they think I'll pay 50 cents for a hair cut, forget it."
- "I read the other day where some scientist thinks it's possible to put a man on the moon by the end of the of the century. They even have some fellows they call astronauts preparing for it down in Texas."
- "Did you see where some baseball player just signed a contract for \$75,000 a year just to play ball? It wouldn't surprise me if someday they'll be making more than the president."

- "I never thought I'd see the day all our kitchen appliances would be electric. They are even making electric typewriters now."
- "It's too bad things are so tough nowadays. I see where a few married women are having to work to make ends meet."
- "It won't be long before young couples are going to have to hire someone to watch their kids so they can both work."
- "Marriage doesn't mean a thing any more; those Hollywood stars seem to be getting divorced at the drop of a hat."
- "I'm just afraid the Volkswagen car is going to open the door to a whole lot of foreign business."
- "Thank goodness I won't live to see the day when the Government takes half our income in taxes. I sometimes wonder if we are electing the best people to congress."
- "The drive-in restaurant is convenient in nice weather, but I seriously doubt they will ever catch on."
- "There is no sense going to Lincoln or Omaha anymore for a weekend. It costs nearly \$15 a night to stay in a hotel."
- "No one can afford to be sick any more; \$35 a day in the hospital is too rich for my blood."

"...and a diet coke please."





A man boarded a plane and took his seat in an empty row. Shortly, a large number of priests and Swiss guards boarded the plane and took their seats. The man realised that the Pope must be on this flight, when the Pope himself came down the aisle, looking for his seat. The man could hardly believe when the Pope took the seat beside him!

He didn't know what to say, or whether he should address the pope, when he noticed the pope had started filling in a crossword. He was quite impressed as he watched the Pope rapidly filling in the puzzle.

However, he notices the Pope scribbling, as he seemed to be stuck on the last word. The Pope said out loudly, "Can anyone think of the answer for this question? The clue is a female. It is a four letter word and ends in 'UNT'."

The priests and Swiss guards all looked away, hoping not to be called on. The man thought long and hard, when he said "Your holiness, I think I know the answer - It is 'AUNT'."

"Thank you, my son", said the Pope, "Of course it is - Umm, you wouldn't have an eraser I could borrow would you?"

The Fine Print

At The Meridian Line

Wherever possible we try to acknowledge the source of all information contained in this newsletter. We offer no guarantees for accuracy, but we do our best.

Get the Word Out

Feel free to forward this newsletter to any family or friends who you feel might enjoy a good read. If they would like to receive this newsletter on a regular basis they can register at: <https://meridianmaps.com.au/newsletter/>

Using information from this newsletter

You are welcome to use information from this newsletter, but we request that you kindly acknowledge that the information is from The Meridian Line.

Meridian Contact information

Email: rochelle@meridianmaps.com.au

Disclaimer

Please note that the opinions and articles expressed in The Meridian Line are not necessarily those of The Meridian team. Also, we do not endorse any products (other than our own), or tours listed in any contributed article.